

# Welcome to Birchfield Nursery School

Hello to the Class of 2024-25





THERE ARE TWO  
GIFTS WE SHOULD  
GIVE OUR CHILDREN;  
ONE IS ROOTS, AND  
THE OTHER IS WINGS.

# Birchfield Staff



Cathy Liku  
**Headteacher**  
Senco  
Safeguarding Lead



Louise Bancroft  
**Assistant Headteacher**  
Deputy Safeguarding Lead



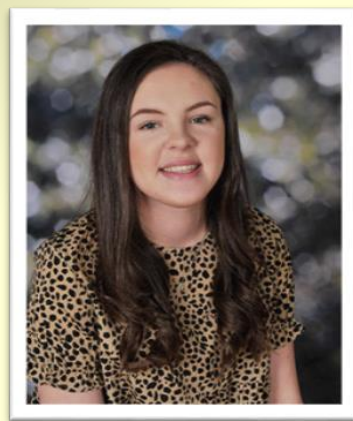
Helen Rice  
**Business Manager**

# Let's meet the fabulous teachers who are going to take care of you

Sarah Jarvis



Mia Craig



Linsey Flannagan



Emma Knight



Helen Patrick



Nicola Streete



Jane Hinde



Hayley Patterson



## Early Years Practitioners

# Support Staff



Carol Ross-Devereux  
**Caretaker**



Sue Woods  
**Midday Assistant**



Lesley Muskett  
**Midday Assistant**

Lunchtime is also supported by  
Chelsea Corcoran, Midday Assistant  
Rachel Hughes, Midday Assistant  
Nicola Streete, Teaching Assistant  
Linsey Flanagan, Teaching Assistant

# Uniform

Our child friendly, pocket-friendly, uniform helps our children to feel a sense of belonging at Birchfield. It is meant to be functional and support children to be fully involved in their early years experiences and opportunities. Uniform is available from Boydell's Widnes with supplementary items available at most supermarkets.

**Uniform consists of:**

**School Jumper**

**White polo**

**Black joggers/leggings**

**Practical shoes (preferably trainers that children can put on and off)**

**NOT SANDALS**

Lots of parents choose to put their little ones in a pinafore/skirt and a summer dress in warmer weather. This is parental choice but we ask parents to be mindful that clothing is warm and supports involvement in outdoor/physical play.

**Please label ALL items coming into nursery**

# Snack Time

Children all have a healthy snack daily that includes a savoury item and fruit along with milk or water.

We check our snack regularly for sugar and sodium content and if it is allergy friendly.

If your child has allergies please inform us prior to starting to check that our snack is inclusive for your child.



# Toileting



*Please let us know before your child starts about any toileting issues...we really are here to help*



# Making Friends



# Lunches

## RECOMMENDED DAILY SUGAR INTAKE FOR CHILDREN

AGE	MAXIMUM SUGAR INTAKE PER DAY	CUBES	TEASPOONS
2 years	No more than 13 grams	3	1 to 3
3 years	No more than 15 grams	4	2 to 4
4-6 years	No more than 19 grams	5	3 to 5
7-10 years	No more than 24 grams	6	4 to 6



# Families are important

We know this can be a tough time for all parents...don't think of this as saying goodbye but as an exciting step in your child's life journey. We are on that journey with you so always ask questions, share worries. Contact me at

[head@birchfield.halton.sch.uk](mailto:head@birchfield.halton.sch.uk)



# Always Learning

The nursery is a place where you will learn and discover so many wonderful things. We encourage our children to ask questions and wonder about the world around them through our 'Learning Challenge Curriculum.





# The Classrooms



Every room is packed full of amazing things to do. We have an art room, a building room, a sand and water area and a whole room for playing 'home'



# The Great Outdoors



The more risks you allow  
your children to make, the  
better they learn to look  
after themselves  
— Roald Dahl



# Making Mathemagicians!

We are passionate about establishing strong knowledge in both maths and phonics to support your child as they make their next steps into primary. We are the first and only nursery to be using the 'Early Maths fluency' approach and we have strong links with local primaries and the local teaching schools. Maths really is fun at Birchfield and you will be amazed by what your child learns!





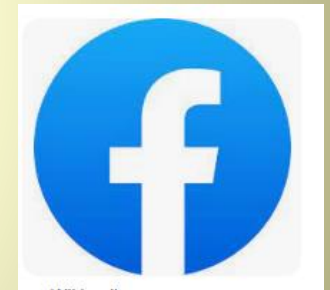
# Fabulous Phonics

We are committed to supporting our children in early literacy. From the start of your child's journey we will deliver daily sessions to develop phonics skills. As their journey continues we deliver systematic synthetic phonics sessions with the aim of starting your child on their journey as a reader.

Look out for, and sign up to, parents workshops to maximise learning at home.



# Communication



# Payments

We rely on contributions to support us in providing additional services and offers.  
These are:

What?	How much?	What is it for?
15 Hour Snack/Dance/PE	£5 weekly Can be paid weekly/monthly/half termly/termly	Daily snack Weekly dance session with qualified dance teacher Weekly PE lesson with qualified PE teacher
30 Hours Additional Payment	£6 daily/£30 weekly Can be paid weekly/monthly/half termly/termly	Additional services not covered by funding such as snack/dance/lunchtime provision/curricular opportunities e.g. Farm/Christmas Party/Visiting Performances
Breakfast Club/After School Club (optional max 8 children each session)	£5 per session Can be paid weekly/monthly but must be booked in advance	Each session of childcare includes breakfast/afternoon snack Breakfast Club Mon-Fri 8am-9am After-School Club Mon-Fri 3.45pm-4.30pm
Voluntary Contributions	£5 termly	A voluntary contribution to school funds to support craft/creative activities

**30 hours is allocated with the understanding that a £6.00 daily charge is applicable for lunch supervision and costs not met by government funding.**

Payments are made using the School Spider app which you will be given access to once your child is admitted or you can use Tax-Free Childcare, an online childcare account for your child and for every £8 you pay into this account, the government will pay in £2

<https://www.gov.uk/tax-free-childcare>

# 30 Hour Codes

Don't forget to apply for your 30 hours code via the government website <https://www.gov.uk/30-hours-free-childcareoffers>

## When to apply

You can apply from when your child is 2 years and 36 weeks old.

<b>When your child turns 3</b>	<b>When they can get 30 hours from</b>	<b>Recommended time to apply</b>
<b>1 September to 31 December</b>	Term starting on or after 1 January	15 October to 30 November
<b>1 January to 31 March</b>	Term starting on or after 1 April	15 January to 28 February
<b>1 April to 31 August</b>	Term starting on or after 1 September	15 June to 31 July

# Parking

Parking around the nursery is difficult and, for safety reasons, not permitted.

We appreciate that this is a headache which is why we have retained a staggered start and flexible drop-off for our groups to ease congestion. Cars are not allowed to park in the entry driveway apart from breakfast club/after school club drop off.

**If you are a blue badge holder please let us know and we will provide you with a permit.**

