

WELCOME TO BIRCHFIELD

A huge welcome to Birchfield Nursery School and a big welcome back to our returners! September is always a time of many emotions; excitement, fear, anxiety (and that's just parents!) Having had a couple of days back we can already see that the children are exploring and engaging with all that Birchfield has to offer and blossoming friendships are evident everywhere. Transition this year is a little slower than usual as we are mindful that these are our 'COVID' era babies. We have followed guidance and recommendations on a sensitive start to the year and, although this may slow September down, we hope that the impact proves to be positive.

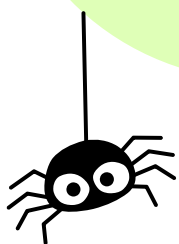
I know that for many of you this is your first experience of school and we aim to make this a positive experience. We genuinely value your input and support as we become partners on this part of your child's educational journey so please do work with us.

We look forward to an exciting year ahead.

INFORMATION OVERLOAD WARNING!

START OF YEAR BRINGS WITH IT LOTS OF INFORMATION. IF AT ANYTIME YOU DO NEED TO REMIND YOURSELF OF ANYTHING OUR MAIN POINT OF INFORMATION IS OUR WEBSITE WHICH CAN BE FOUND AT <https://www.birchfieldnursery.co.uk/>

SCHOOL SPIDER
YOU WILL RECEIVE AN
INFORMATION GUIDE FOR SET
UP VIA EMAIL. PLEASE SET
THIS UP ASAP AS THIS IS OUR
CENTRAL SPACE FOR
PAYMENTS AND INFORMATION



EVENTS

WEDNESDAYS

Mini movers dance with Claire
starts week beginning 25.10.23

FRIDAYS


P.E. with Mrs. Royle
starts week beginning 25.9.23

Parents meetings
week beginning 2.10.23
appointments can be made via school spider from
Friday 22nd September

HALF TERM

School closes normal times
Friday 27th October
Reopens
Monday 6th November

EVENTS CAN ALSO BE FOUND ON THE
EVENTS TAB OF THE WEBSITE
AND WILL BE ADDED AS THE YEAR
GOES ON



The Great outdoors...

as you can see we have invested heavily into our outdoor provision. Outdoor play and learning is essential for all children and is part of our continuous provision every day...even when its raining! We have a large stock of wellies and waterproofs and children are supported to put these on however sometimes your child may get a little muddy. Trust us when we say it is the sign of a productive time! Our area is risk assessed and checked daily as well as very closely supervised but if you do have any questions do raise them via email to head@birchfield.halton.sch.uk

One of the first things we teach our children is the famous coat trick!!! Give us a couple of weeks and your child will be amazing you with it!



Wraparound Clubs

We have had a phenomenal response to clubs this year and as a result need confirmation of required space asap. We will look to increase staff numbers where possible to meet demand but these bookings must be made in advance and paid for, even if you do not attend as per our charges policy.



PHOTO SHARING

WE WILL BE POSTING OCCASIONAL PICTURES ON OUR WEBSITE. IF YOU DO NOT WANT YOUR CHILD TO APPEAR IN THEM PLEASE CONTACT OFFICE@BIRCHFIELD.HALTON.SCH.UK A COPY OF OUR PRIVACY POLICY CAN BE FOUND ON THE WEBSITE



PLEASE LABEL EVERYTHING!!

PLEASE ENSURE THAT YOUR CHILD HAS A CHANGE OF CLOTHES, INCLUDING SOCKS, IN SCHOOL AT ALL TIMES

PARKING

CARS ARE NOT PERMITTED TO PARK ON THE APPROACH DRIVEWAY AT ANY TIME. POLICE WILL BE MONITORING THE AREA THIS YEAR FOLLOWING SEVERAL DANGEROUS INCIDENTS LAST YEAR



OFFICE CONTACT: OFFICE@BIRCHFIELD.HALTON.SCH.UK
SENCO: HEAD@BIRCHFIELD.HALTON.SCH.UK

PAYMENTS

UNFORTUNATELY GOVERNMENT FUNDING DOES NOT FULLY MEET THE COST OF PROVISION IN EARLY YEARS. THIS IS NOT ONLY AN ISSUE AT BIRCHFIELD BUT ACROSS THE SECTOR. WE KNOW THE LONG-LASTING, POSITIVE IMPACT THAT HIGH QUALITY EDUCATION CAN HAVE ON CHILDREN AND WE PASSIONATELY WANT TO OFFER THE BEST. IN ORDER TO DO THIS (IN LINE WITH GOVERNMENT GUIDANCE AND LOCAL AUTHORITY SUPPORT) WE REQUIRE ADDITIONAL PAYMENTS FROM PARENTS AND CARERS. EVERY YEAR WE LOOK AT THIS COST AND DO OUR UTMOST TO KEEP THIS AT A MINIMUM. WE KNOW THAT WHAT WE OFFER IS EXCEPTIONAL AND AT THE MOST COMPETITIVE RATE AVAILABLE.

PAYMENT IS STILL REQUIRED IF YOUR CHILD IS ABSENT

I AM ALWAYS MINDFUL OF THE COST OF LIVING AND WILL ALWAYS LOOK TO HELP ANYONE IN GENUINE HARDSHIP. IF YOU FIND YOURSELF STRUGGLING WITH ANY FINANCIAL REQUESTS PLEASE DO REACH OUT TO ME AND I WILL HELP WHERE I CAN. INVOICES ARE SENT OUT FROM THE OFFICE AND PAYMENT ENQUIRIES SHOULD BE DIRECTED TO MRS. RICE

PAYMENTS BEGIN WEEK BEGINNING 25TH SEPTEMBER FOR NEW STARTERS. ANY PAYMENT ISSUES PLEASE RAISE WITH MRS RICE ASAP

We have lots of spare uniform. Please help yourself from stock outside on dry days or ask at the office



Baseline Time

The start of year is an extra busy one for staff as we gather information to ensure that your child is receiving all the support they may need to be their very best little self. Part of this baseline involves a speech and language screening, Wellcom. This involves your child playing games and having a special 1:1 session where we gather a full picture of comprehension and understanding. Alongside this we will be undertaking observations to see if your child might benefit from further support from outside agencies. If you do have any concerns that have not already been raised please do contact me at head@birchfield.halton.sch.uk

Parent 1:1 sessions are offered w.b 2nd October. This is when you will meet your child's assigned keyworker and discuss any potential referrals.

Children do not need to bring in water bottles. We have a water cooler with immediate supervised access and snack available most of the day. Bottles unfortunately get used by several children leading to increased illness.